

CERTIFICATE OF LOCATION OF GOVERNMENT CORNER

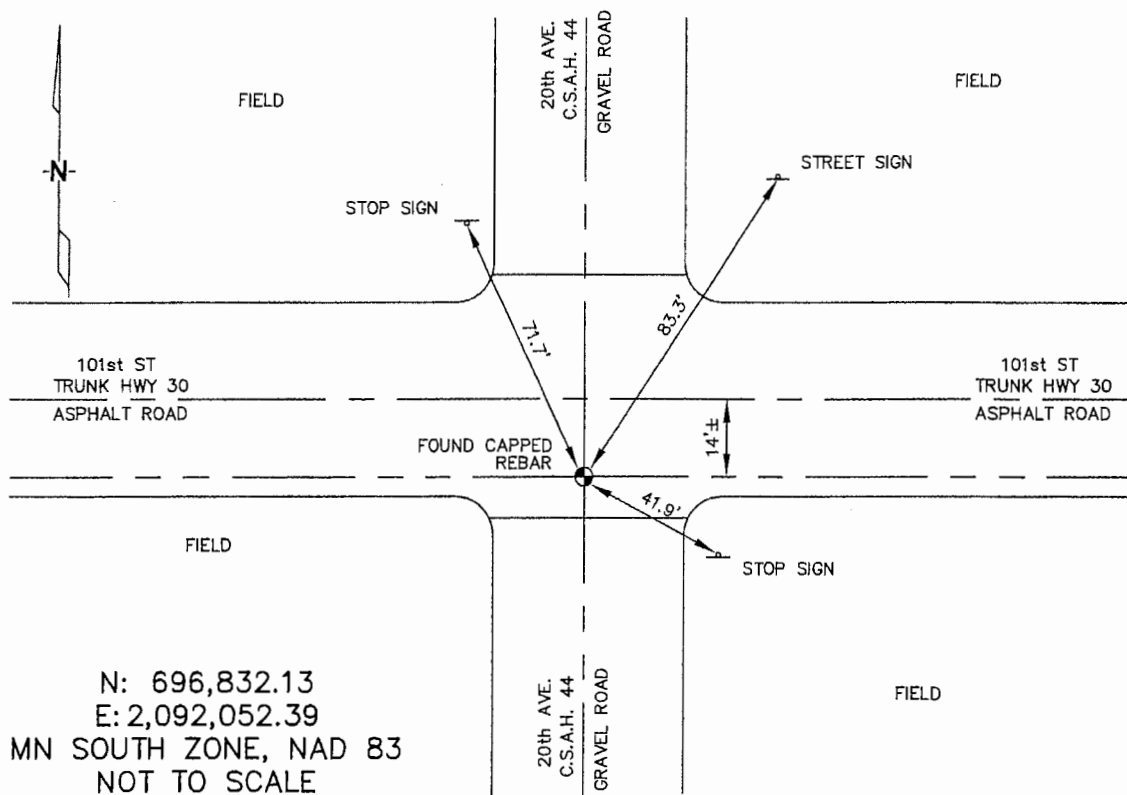
NORTHWEST Corner of Section 16, Township 106N, Range 43W, 5TH P.M.

STATE OF MINNESOTA, County of MURRAY

At the corner location shown on the sketch :

- On 3/22/2006 found A REBAR WITH AN UNREADABLE CAP, ON
20TH AV C/L & 14'± SOUTH FROM T.H. 30 C/L.
 - left monument as found, lowered monument, removed monument (explain)
- On _____ set _____

Sketch of reference ties



Statement of evidence relative to this corner location is on back page

I hereby certify that this document and the data contained herein was prepared by me or under my direct supervision.

Thomas V. Jeff 5/22/06
 Thomas V. Jeff Date
 Registration No. 44563

- Land Surveyor, Professional Engineer
- County Surveyor, County Engineer

OFFICE OF THE COUNTY RECORDER

County of _____

SEP 28 2006

I hereby certify that this document was filed in the Co. Recorders office at _____ M. on the _____ day of _____ A.D., 20

County Recorder Janna Y. Johnson
 By _____, Deputy

DOCUMENT NO. _____

STATEMENT OF EVIDENCE:

NORTHWEST CORNER, SECTION 16, T. 106 N., R. 43 W.,
MURRAY COUNTY, MINNESOTA

- 1866 J.W. Bishop, US. Deputy Surveyor, monumented corner.
- 12/18/1913 Murray Co. placed a stone on the corner.
Ties: SW-63.5' to tack in corner of fence post;
SE-79.3' to tack in telephone pole.
- ? Date MN DOT R/W Map for Trunk Highway 30, calls for the corner being set for ties furnished **b**y the County Engineer; 12.0' south from C/L PI Sta 746+12.3.
- 7/01/1983 Murray Co. located 1/2" steel pin on surface.
Tie: NW-89.79' to nail & cap in telephone pedestal post.
- 3/22/2006 Ulteig Engineers, Inc., Survey Crew, Dennis Lavallie Party Chief, found a rebar with an unreadable cap, on the C/L of 20th Ave. & 14'± south from the C/L of 101st Street.
Ties: NE-83.3' to steel post of Street Sign;
SE-41.9' to steel post of Stop Sign;
NW-71.7' to steel post of Stop Sign.